

Introduction

ConfigR Version 1.05 is designed to work with the new features of the **RSVP²**. These include:

- A LOCK OUT Mode which prevents an operator from changing the level or frequency settings in SOURCE Mode. This removes the possibility of accidentally setting the RSVP²'s output to an occupied frequency, or to a level large enough to compress the upstream laser at the node.
- The range over which the RSVP² can test return levels has been expanded by 10dB (+20dB to +55dB in 1dB steps). This allows the Installer to test the return "launch level" through a wide range of tap and splitter values without using an external pad. The RSVP² has sufficient range to be connected directly to taps as low as 7dB; even in systems operating at reduced return levels or to services with as much as 35dB isolation, operating at normal levels.

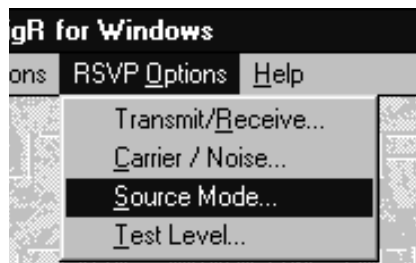
This addendum shows you how to use ConfigR with the new RSVP² features.

NOTE: The LOCK OUT feature and increased level range can be used ONLY with the RSVP². If you are using the earlier RSVP model, this version of ConfigR will work with the unit but you will NOT be able to use the advanced functions.

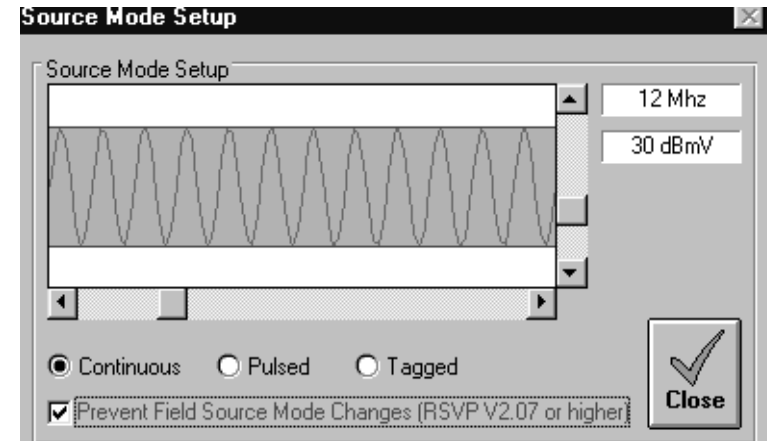
For information on how to install and use all the features of ConfigR, please refer to the *CONFIGR OPERATION MANUAL*.

LOCK OUT Mode

To implement the LOCK OUT Mode, go to the RSVP OPTIONS menu and select SOURCE MODE.

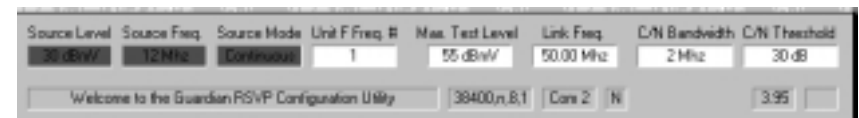


When the SOURCE Mode screen appears, *click* on the PREVENT FIELD SOURCE MODE CHANGES box at the bottom of the screen. A check mark will appear in the box indicating that the LOCK OUT Mode has been enabled.



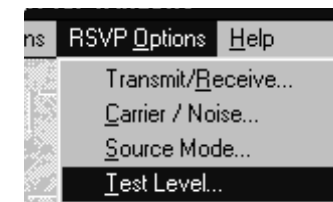
Select the SOURCE Mode parameters (refer to *SOURCE MODE* on page 20 in the *CONFIGR OPERATION MANUAL*) and then *click* on the **CLOSE** button.

When you close the SOURCE Mode screen, you will notice that the first three display boxes (SOURCE LEVEL, SOURCE FREQ. and SOURCE MODE) in the STATUS BAR at the bottom of the Main Window are now colored red. This indicates that these parameters can NOT be changed (on the RSVP² unit) in the field.

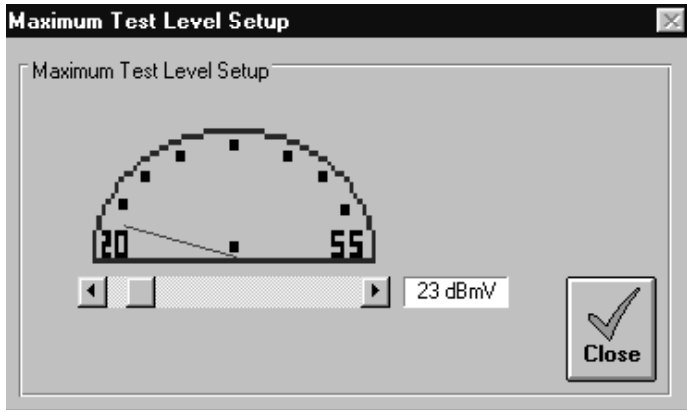


Test Level

The RSVP² supports a level range of +20dB to +55dB which is incremented in 1dB steps. To access the TEST LEVEL screen, go to the RSVP OPTIONS Menu and select TEST LEVEL.



When the TEST LEVEL screen appears, you will see that the LEFT value is now +20dB instead of +30dB (in the example below, the MAXIMUM TEST LEVEL SETUP range is set to 23dBmV).



For further information about setting the range levels, see *TEST LEVEL* on page 21 of the CONFIGR OPERATION MANUAL.

REMINDER: If you are using an older RSVP unit instead of the RSVP², the unit will not acknowledge a range LOWER than +30dB. If ConfigR is set to less than +30dB, the older RSVP unit will reset to +30dB when it is turned on.

That's all there is to it. You are now ready to use ConfigR and RSVP²'s new functions.



ConfigR
Vers. 1.05

ADDENDUM FOR RSVP² FEATURES



The Best Thing on Cable
9202 E. 33rd St.
Indianapolis, IN 46236
(317) 895-3600